

# MONTHLY MEMBERSHIP PROGRESS REPORT

District 26 M5

Results as of: 3/31/2020

GMT:

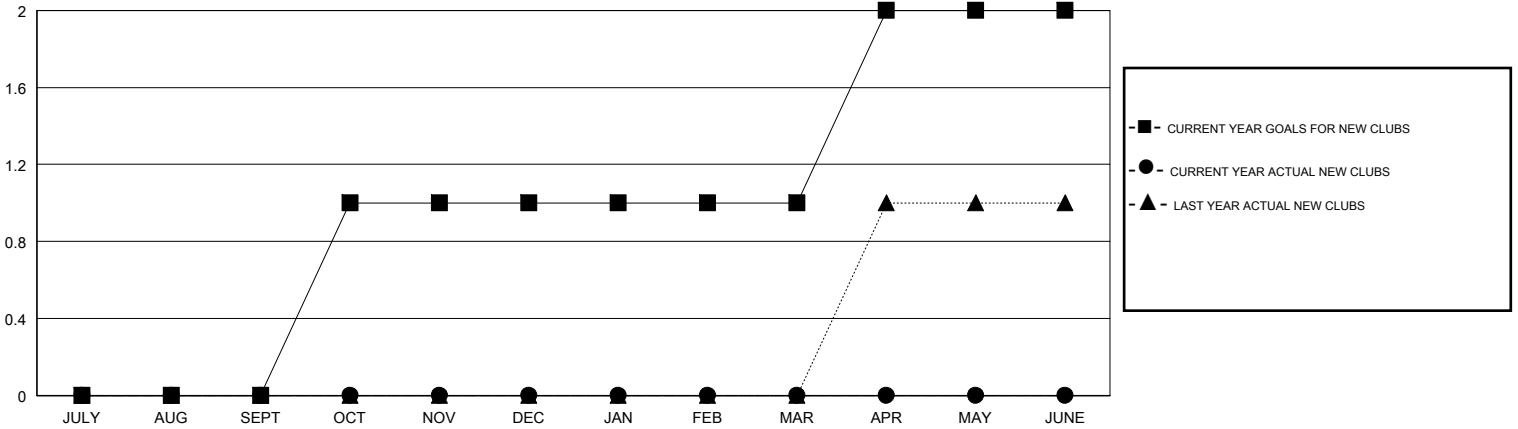
LOCATION MISSOURI

GMT CA

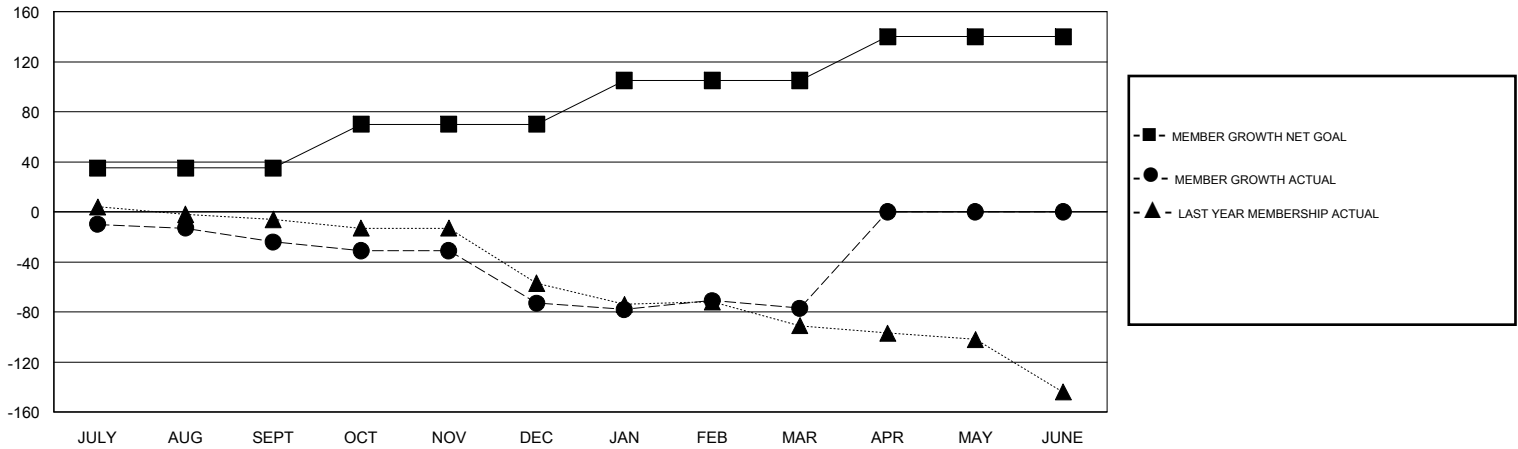
Clubs			
RESULTS FOR 2019-2020			
QUARTER	NEW CLUB GOAL	NEW CLUBS	DROPPED CLUBS
JULY/AUG/SEPT	0	0	0
OCT/NOV/DEC	1	0	3
JAN/FEB/MAR	0	0	0
APR/MAY/JUNE	1	0	0

Members			
RESULTS FOR 2019-2020			
QUARTER	MEMBER GROWTH NET GOAL	MEMBER GROWTH ACTUAL	DROPPED MEMBERS ACTUAL (including transfers)
JULY/AUG/SEPT	35	24	45
OCT/NOV/DEC	35	9	57
JAN/FEB/MAR	35	18	21
APR/MAY/JUNE	35	0	0

GOALS AND ACTUAL NEW CLUBS CUMULATIVE



GOALS AND ACTUAL MEMBERS CUMULATIVE



DROPPED CLUBS: 3	25 CLUBS OF 51 ADDED 1 OR MORE NEW MEMBERS	<b>GENDER DISTRIBUTION</b> MALE 726 (66.61%) FEMALE 364 (33.39%)
<b>DROPPED MEMBERS</b> DECEASED 10 CLUB CANCELLED 30 OTHER 83 <b>TOTAL 123</b>	<a href="#">CLICK HERE FOR CUMULATIVE MEMBERSHIP DATA</a>	TOTAL FAMILY UNIT MEMBERS 232 FAMILY MEMBERS PAYING HALF DUES 120